

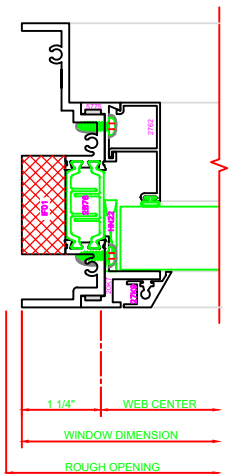
| | |
|-----|----------------------|
| 100 | HEAD |
| | SERIES: 450 FIXED |

| | |
|-----|--|
| 530 | MEETING RAIL |
| | SERIES: 450G FIXED/C.I. 4-BAR ARMS |

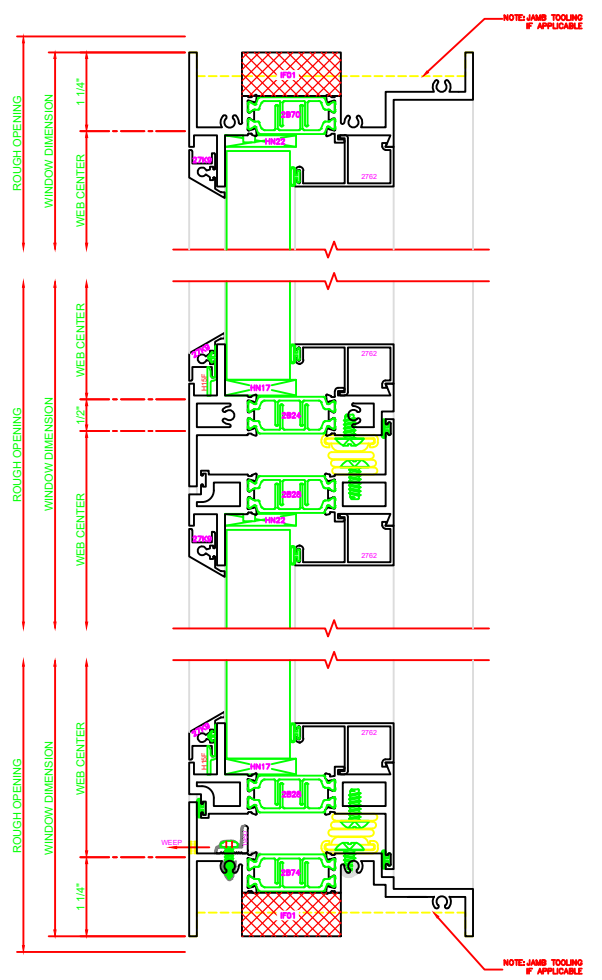
| | |
|-----|---|
| 230 | SILL |
| | SERIES: 450G CASEMENT IN 4-BAR ARMS |

| | |
|-----|---|
| 433 | JAMB |
| | SERIES: 450G CASEMENT IN 4-BAR ARMS |

| | |
|-----|-----------------------------|
| 434 | JAMB |
| | SERIES: 450G CASEMENT IN |

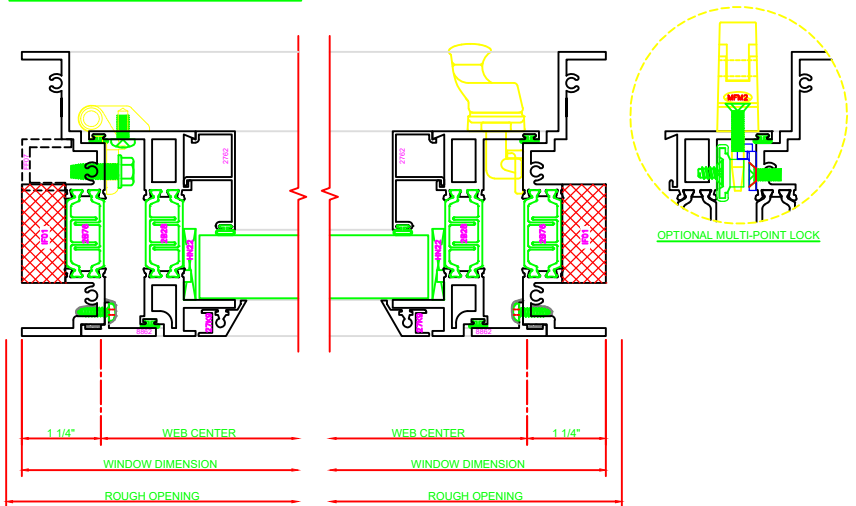


| | |
|-----|-----------------------|
| 402 | JAMB |
| | SERIES: 450G FIXED |



4-BAR ARMS BUTT HINGE

13 ERECTOR NOTE:
THE HINGED JAMB FRAME SHALL BE INSTALLED PLUMB. ALL HINGES SHALL BE SECURELY BLOCKED AND ANCHORED TO THE CONDITION THROUGH THE HINGES OR AS CLOSE AS POSSIBLE TO THE HINGES.



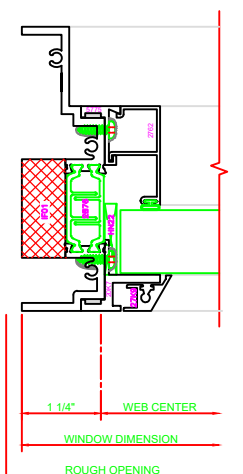
| | |
|-----|----------------------|
| 100 | HEAD |
| | SERIES: 450 FIXED |

| | |
|-----|--|
| 532 | MEETING RAIL |
| | SERIES: 450G FIXED/C.I. BUTT HINGE |

| | |
|-----|---|
| 231 | SILL |
| | SERIES: 450G CASEMENT IN BUTT HINGE |

| | |
|-----|---|
| 435 | JAMB |
| | SERIES: 450G CASEMENT IN BUTT HINGE |

| | |
|-----|-----------------------------|
| 434 | JAMB |
| | SERIES: 450G CASEMENT IN |



| | |
|-----|-----------------------|
| 402 | JAMB |
| | SERIES: 450G FIXED |

